



PYROBEL



VISION LINE



GLASS UNLIMITED

[www.yourglass.com](http://www.yourglass.com)

Overseas markets : AGC Glass Europe - Seneffe plant - Tel. : +32 (0)64 51 05 19 - Fax : +32 (0)64 55 80 80 - [pyrobel@eu.agc.com](mailto:pyrobel@eu.agc.com)  
United Kingdom & Ireland : AGC Glass UK Ltd - Tel. : +44 (0)1788 53 53 53 - Fax : +44(0)1788 56 08 53 - [sales.uk@eu.agc.com](mailto:sales.uk@eu.agc.com)  
AGC has representatives worldwide - See [www.yourglass.com](http://www.yourglass.com) for further addresses.



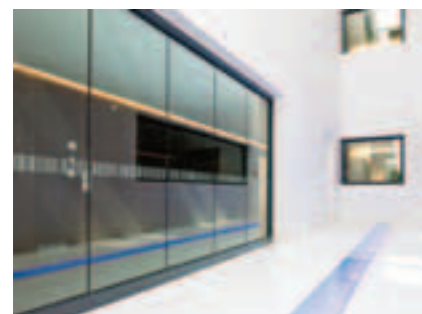
Bronks Théâtre pour la jeunesse, Bruxelles



HISD Admin. Building, Houston



Sensata Technologies Building, Providence



AZ Groeninge, Kortrijk

## PYROBEL Vision Line, The solution for fire resistance, safety and transparency.

Advances in fire-rated glass technology by AGC Glass Europe\* have made it possible to achieve much larger expanses of clear glazing without compromising the protection required by the Standards.

Pyrobel Vision Line allows for new design options and architectural solutions which are more and more requested by architects and designers.

The system uses multiple Pyrobel fire-rated glazing panels, separated by 4 to 5 mm of Fire Resistant silicone joint - providing you with clear, unobstructed views and the ultimate in fire protection.

With the absence of intermediate framing, the Pyrobel Vision Line transparent wall offers continuous views and uncompromising beauty.

The Pyrobel Vision Line has been tested for 30 and 60 minutes integrity and insulation (EI – Insulation following EN 13501-2) in steel, aluminium and wooden frames.

### Advantages:

- Both fire rated classes available EI 30 and EI 60
- Clear partition without mullions
- Different type of silicones used
- Adaptable with all kind of frames and doors
- Unlimited partition available
- Safety glass with impact resistance values (EN 12600)
- Sound reduction values (EN 12758)

### Specification:

- Technical advice regarding specification and installation available from AGC

(\*) AGC Glass Europe makes and processes flat glass for the construction industry (exterior glazing and interior decorative glass) and for specialised industries. Based in Brussels, Belgium, it is the European branch of AGC Glass, the world's leading producer of flat glass.

## Product range

Type of frame	WOOD				
	30 / 30			60 / 60	
Fire resistance (BS476) Integrity / Insulation					
Product Specification	Pyrobel 16 Vision Line	Pyrobel 16 EG Vision Line	Pyrobel 16 EG2 Vision Line	Pyrobel 25 Vision Line	Pyrobel 25 EG Vision Line
Glazing Type	Single	Single	Single	Single	Single
Grade (*)	Internal	External	External	Internal	External
Application	Internal screen	Internal screen	Internal screen	Internal screen	Internal screen
Nominal Thickness	17,3 mm	21,1 mm	24,9 mm	26,6 mm	30,4 mm
Thickness Tolerance	± 1 mm	± 1,5 mm	± 2 mm	± 2 mm	± 2 mm
Weight	40 kg/m <sup>2</sup>	48 kg/m <sup>2</sup>	56 kg/m <sup>2</sup>	60 kg/m <sup>2</sup>	68 kg/m <sup>2</sup>
Dimension Tolerance	± 2 mm	± 2 mm	± 2 mm	± 2 mm	± 2 mm
Light Transmission (EN410)	84%	83%	81%	81%	80%
U <sub>g</sub> Value (EN673)	5,4 W/(m <sup>2</sup> .K)	5,2 W/(m <sup>2</sup> .K)	5,0 W/(m <sup>2</sup> .K)	5,2 W/(m <sup>2</sup> .K)	5,0 W/(m <sup>2</sup> .K)
Safety Rating (BS6206) (EN12600)	Class B 2B2	Class A 1B1	Class A 1B1	Class A 1B1	Class A 1B1
Sound Reduction Rw index (C, Ctr) (EN12758)	39 dB (-1; -3)	39 dB (-1; -3)	40 dB (-1; -3)	40 dB (-1; -3)	43 dB (-1; -4)
Identification	Pyrobel 16 VL EN14449 BS476 30/30 EN12600 2B2 AGC	Pyrobel 16 EG VL EN14449 BS476 30/30 EN12600 1B1 AGC	Pyrobel 16 EG2 EN14449 BS476 30/30 EN12600 1B1 AGC	Pyrobel 25 VL EN14449 BS476 60/60 EN12600 1B1 AGC	Pyrobel 25 EG VL EN14449 BS476 60/60 EN12600 1B1 AGC
Certification	Certifire CF377	Certifire CF377	Certifire CF377	Certifire CF377	Certifire CF377
Standard	BS476	BS476	BS476	BS476	BS476
Frame	Wood	Wood	Wood	Wood	Wood
Maximum dimensions (**) (Width x Height)	1200 x 2900 mm 1500 x 2874 mm	1200 x 2900 mm 1500 x 2874 mm	1200 x 2900 mm 1500 x 2874 mm	1200 x 2900 mm 1380 x 2874 mm	1200 x 2900 mm 1380 x 2874 mm

(\*) in case of direct solar radiation on the glazing or required high safety level, Pyrobel Vision Line is available as External Grade.  
(\*\*) for alternative dimensions within pane area, please consult AGC Glass Europe.

Type of frame	STEEL			ALUMINIUM
	30 / 30	60 / 60		30 / 30
Fire resistance (BS476) Integrity / Insulation				
Product Specification	Pyrobel 16 Vision Line	Pyrobel 25 Vision Line	Pyrobel 25 EG Vision Line	Pyrobel 16 Vision Line
Glazing Type	Single	Single	Single	Single
Grade (*)	Internal	Internal	External	Internal
Application	Internal screen	Internal screen	Internal screen	Internal screen
Nominal Thickness	17,3 mm	26,6 mm	30,4 mm	17,3 mm
Thickness Tolerance	± 1 mm	± 2 mm	± 2 mm	± 1 mm
Weight	40 kg/m <sup>2</sup>	60 kg/m <sup>2</sup>	68 kg/m <sup>2</sup>	40 kg/m <sup>2</sup>
Dimension Tolerance	± 2 mm	± 2 mm	± 2 mm	± 2 mm
Light Transmission (EN410)	84%	81%	80%	84%
U <sub>g</sub> Value (EN673)	5,4 W/(m <sup>2</sup> .K)	5,2 W/(m <sup>2</sup> .K)	5,0 W/(m <sup>2</sup> .K)	5,4 W/(m <sup>2</sup> .K)
Safety Rating (BS6206) (EN12600)	Class B 2B2	Class A 1B1	Class A 1B1	Class B 2B2
Sound Reduction Rw index (C, Ctr) (EN12758)	39 dB (-1; -3)	40 dB (-1; -3)	43 dB (-1; -4)	39 dB (-1; -3)
Identification	Pyrobel 16 VL EN14449 BS476 30/30 EN12600 2B2 AGC	Pyrobel 25 VL EN14449 BS476 60/60 EN12600 1B1 AGC	Pyrobel 25 EG VL EN14449 BS476 60/60 EN12600 1B1 AGC	Pyrobel 16 VL EN14449 BS476 30/30 EN12600 2B2 AGC
Certification	Certifire CF377	Certifire CF377	Certifire CF377	Certifire CF377
Standard	BS476	BS476	BS476	BS476
Frame	Jansen Janisol 2 or Certifire approved	Jansen Janisol C4 or Certifire approved	Jansen Janisol C4 or Certifire approved	Schüco ADS80 FR30 or Certifire approved
Maximum dimensions (**) (Width x Height)	1200 x 2900 mm 1500 x 2840 mm	1200 x 2900 mm 1236 x 2861 mm	1200 x 2900 mm 1236 x 2861 mm	1250 x 2900 mm